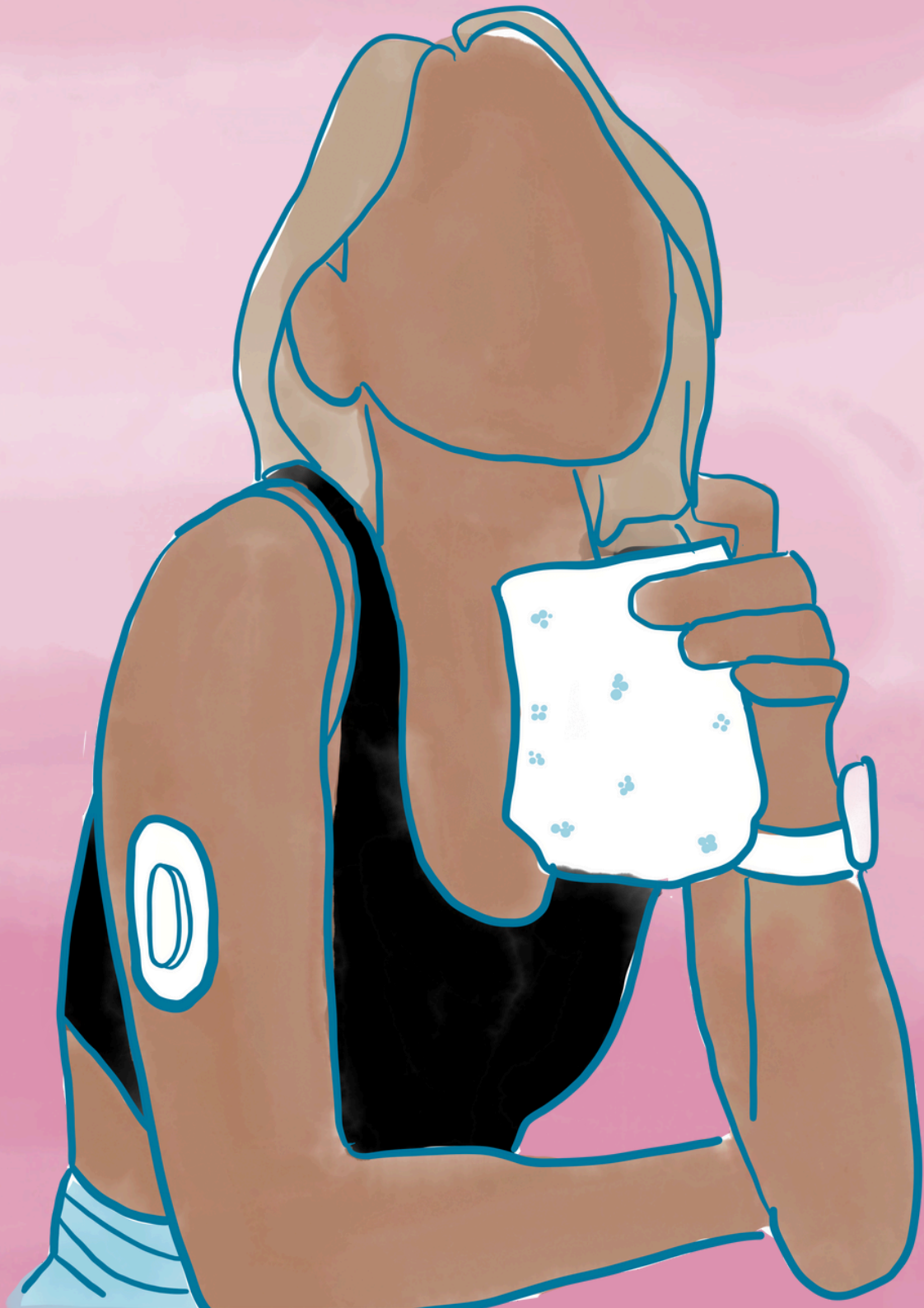


# PHARMAC FUNDING OF CGMS AND INSULIN PUMPS

*a summary for our  
CF community*



# SUMMARY

## Pharmac's Decision

From 1 October 2024, Pharmac will fund continuous glucose monitors (CGMs), insulin pumps and consumables for people with Type 3c diabetes, including people with insulin deficiency caused by cystic fibrosis.

Pharmac will fund standalone CGMs, insulin pumps, and CGMs for use with insulin pumps to enable automated insulin delivery. Pharmac's decision also includes transitional arrangements for people who are already using an insulin pump, and arrangements for those who may not be able to use the funded CGMs and/or insulin pumps.

This document summarises Pharmac's decision and how you can get access to CGMs, insulin pumps, and consumables. Pharmac's website has more detail about its decision and will continue to be updated as more information becomes available. You can sign up here to receive email updates from Pharmac:

<https://pharmac.govt.nz/news-and-resources/cgms-and-insulin-pumps/continuous-glucose-monitors-cgms>

## WHAT YOU NEED TO KNOW

### Am I eligible for CGMs?

-You have Type 3c diabetes. This includes insulin deficiency caused by cystic fibrosis.

### What CGMs can I have?

-You can choose one of the following:

- Dexcom One+
- Freestyle Libre 2.

### How many CGMs can I have?

-Dexcom One+:

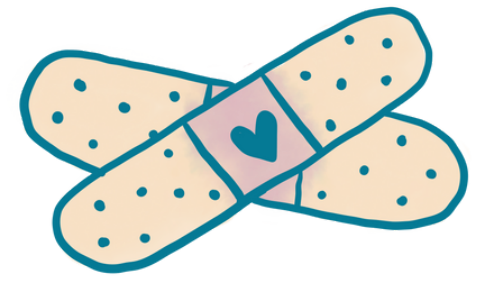
- Up to 40 each year
- Up to 9 on each prescription.

-Freestyle Libre 2:

- Up to 29 each year
- Up to 6 on each prescription.



## I WANT TO USE STAND-ALONE CONTINUOUS GLUCOSE MONITORS



### How do I get CGMs?

- You will need to make an appointment with a GP or see your specialist on or after 1 October 2024.
- Your GP or specialist can then apply for a Special Authority for the CGMs.
- Once the Special Authority is approved, your GP or specialist will write you a 3 month prescription.
- You can collect your CGMs at your pharmacy. Pharmac recommends calling the pharmacy to ensure stock is available.
- There may be a \$5 prescription charge for some people.

### How do I carry on getting access to CGMs?

- You will need a new prescription every 3 months.
- Every 2 years, the GP or specialist will review your use of CGMs to ensure that they are continuing to provide benefit and can apply to renew the Special Authority.

### Adhesive Patches

-Adhesive patches will be supplied with all Dexcom CGMs – they are not needed for Freestyle Libre devices.

### I don't have a compatible phone

Suppliers will provide a standalone reader device for people who do not have a compatible phone to operate the relevant app.

### I don't want to use CGMs

- There is no requirement for you to use CGMs if you don't want to.
- There are no changes to the funding of other blood testing and insulin products.

# I WANT TO USE AN INSULIN PUMP AND COMPATIBLE CGMS

## Am I eligible?

You meet the following criteria:

- You have Type 3c diabetes. This includes insulin deficiency caused by cystic fibrosis: and
- The diabetes specialist team think:
  - An insulin pump is right for you; and
  - An automated insulin delivery (AID) system will provide benefit.
- Certain HbA1c levels are no longer needed to qualify.

## What insulin pump can I have?

Pharmac is funding two insulin pumps:

- Tandem t:slim x2 with Basal-IQ or Control-IQ (insulin pump, algorithm and consumables)
- mylife YpsoPumP with CamAPS FX (insulin pump, algorithm and consumables).

## Automated insulin delivery systems

-Anyone eligible for an insulin pump can also access compatible CGMs to provide an automated insulin delivery system. An algorithm uses the data from the CGM to control the insulin delivered from the pump.

-The Tandem t:slim x2 pump works with:

- Dexcom G6
- Dexcom G7
- Freestyle Libre 3 Plus – by July 2025.

-mylife YpsoPumP works with:

- Dexcom G6
- Freestyle Libre 3 Plus

## How many CGMs can I have?

-Dexcom G6:

- Up to 5 packs per year
- Up to 1 pack on each prescription
- Each pack contains 1 transmitter and 9 sensors.

-Dexcom G7:

- Up to 40 each year
- Up to 9 on each prescription.

-Freestyle Libre 3 Plus:

- Up to 28 each year
- Up to 6 on each prescription.

## How do I get an insulin pump?

-Your diabetes specialist team will determine access to insulin pumps based on the eligibility criteria.

-You will need 3 monthly prescriptions for consumables.

These can be provided by the diabetes specialist teams or by a GP. There may be a \$5 prescription charge for some people.

-You will not have to pay to keep insulin pump software or phone apps up to date.

## What support will I get?

-Diabetes specialist teams will offer the training and support needed to use an insulin pump and compatible CGMs.



## I ALREADY HAVE AN INSULIN PUMP

There are transitional arrangements for people who are already using an insulin pump.

### I'm using a Tandem t:slim insulin pump

Nothing changes:

- You can continue to access consumables in the same way as you do now.
- After 4 years, the warranty on your insulin pump will expire and the pump will need to be replaced.

### I'm using a Medtronic insulin pump

- No new people can start on a MiniMed 770G Medtronic insulin pump from 1 January 2025.
- If you are using a Medtronic pump you have until 1 October 2026 to transfer to a funded pump. Medtronic consumables will continue to be funded until that date.

### I'm using an unfunded insulin pump

If you are using an unfunded brand of insulin pump you will need to talk to your diabetes specialist team to see if you are eligible for a funded pump and CGMs.

## WHAT IF FUNDED PUMPS AND / OR CGMS DON'T WORK FOR ME?

- Pharmac has been advised that the funded brands may not work for some people.
- To access CGMs and/or insulin pumps in these circumstances, your diabetes specialist team can apply to Pharmac under the Exceptional Circumstances Framework.

Your diabetes specialist team will need to advise Pharmac of the:

- Clinical reasons why the funded brand(s) do not work for you; and
- Clinical reasons why you need to stay on your current brand of CGM and/or insulin pump.

Pharmac has said it will provide more details of the Exceptional Circumstances Framework at a later date.

## MORE INFORMATION

Find a CGM comparison table [here >](#)

From the 1 October 2024, the helplines for each device will be open. If you have any technical questions, you can call:

- NZMS, for Dexcom CGM: 0508 634 103
- MediRay (Abbott) for FreeStyle CGM: 0800 106 10